

Clearprint®

QUALITY MEDIA WITH TRADITION

"America's Finest Drafting, Plotting & Xerographic Media"

PRICE LIST

PRICES EFFECTIVE
AUGUST 1, 2000

Supersedes all previous price lists

NEW PRODUCTS!

TINTZ®
Tinted Vellum (page 22)
&
Small Format
Inkjet Papers (page 23)

Serving the
Architectural,
Engineering,
and Fine Arts
Professionals for
Over 65 Years.

1482 - 67th Street
Emeryville, California 94608
Customer Service: 1-800-766-7337
FAX 1-800-950-6733
Visit us at www.clearprintpaper.com

TABLE OF CONTENTS

| PAGE | DESCRIPTION |
|------------------------------|-----------------------------------|
| 2 | TERMS & CONDITIONS |
| MANUAL DRAFTING MEDIA | |
| 3 | 1000H® UNPRINTED |
| 4 | 1020® UNPRINTED |
| 5-6 | 1000H® PRINTED FADE-OUT® GRID |
| 7 | 1020® PRINTED FADE-OUT® GRID |
| 8 | DESIGN & SKETCH PADS |
| 8 | 1025® UNPRINTED |
| 9 | TITLE BLOCK/BORDER |
| 10 | FEDERAL AID/PROFILE CROSS SECTION |
| XEROGRAPHIC MEDIA | |
| 11-12 | XEROGRAPHIC VELLUM |
| 13 | ERASABLE XEROGRAPHIC VELLUM |
| 13 | XEROGRAPHIC BOND |
| PLOTTING MEDIA | |
| 14 | PLOTTER VELLUM |
| LASER PRINTER MEDIA | |
| 14 | LASERLINE VELLUM |
| MISCELLANEOUS | |
| 15 | NON-STANDARD PRODUCTS |
| 16 | LARGE DOCUMENT COPIER MEDIA GUIDE |
| CLEARPRINT 2000 MEDIA | |
| 17-22 | WIDE-FORMAT COLOR MATERIALS |
| 22 | TINTZ® TINTED VELLUM |
| 23 | SMALL-FORMAT INKJET PAPERS |
| 24 | MEDIA/PRINTER COMPATIBILITY GUIDE |

Terms and Conditions

| | |
|------------------------------|--|
| Terms | Net 30 Days |
| Freight | F.O.B factory Emeryville, CA. |
| Minimum Order | \$500 Net Per Order. Standard Packs Only. |
| Sales Tax | The established prices for Clearprint products do not include any taxes. |
| Special/Custom Orders | All orders for non-standard products not listed in this catalog must be made in writing and may not be canceled. Please contact Clearprint Customer Service for price quotations. |
| Defective Merchandise | Any product determined to be defective will be replaced at our expense. This includes any new freight charges that might be incurred. Please contact Clearprint Customer Service for Return Goods Authorization (RGA). Defective merchandise must be returned within 60 days of shipment. |
| Returns | Any product ordered in error must be returned within 60 days of receipt of merchandise at the customer's expense. All merchandise to be returned must have an RGA and be shipped freight prepaid. A 20% restocking charge applies. Items returned must be in a resalable condition. Credit may be disallowed for items not received by Clearprint in a resalable condition. Converting and repacking charges may apply. |
| Freight Damage | Clearprint can assume no responsibility for damage to it's product caused by the freight carrier. Clearprint requests that the customer file a freight claim with the carrier for merchandise damaged by the freight company in transit. Upon receipt of goods with obvious or concealed damage, the customer should contact the carrier and request an immediate inspection. To the best of it's ability, Clearprint will assist the customer in forwarding any paperwork needed to help the customer file it's freight claim. |
| General Terms | Availability of materials is contingent upon strikes, floods, and other causes beyond our control. Clearprint assumes no liability for loss or expense incurred by a purchaser as a result of late delivery. The policy of Clearprint Paper Company is one of continual improvements in design and manufacture wherever possible to assure still finer products. Therefore, prices, design, and manufacture are subject to change without notice. |

1000H[®]

VELLUM Unprinted

16 lbs (68 gms/meter²)

1000H[®] 16-pound vellum is the finest product you can buy for manual drafting. This 100% new cotton fiber media is transparentized without solvents to produce the proper translucency as well as legendary Clearprint archival quality, strength, erasability and redraw characteristics.

| SHEET SIZE (inches) | STOCK NO. | 10 SHEETS | STOCK NO. | 100 SHEETS | STOCK NO. | 250 SHEETS | STOCK NO. | 500 SHEETS |
|---------------------|-----------|-----------|-----------|------------|-----------|------------|-----------|------------|
| 8 1/2 x 11 | 1020-1210 | \$ 5.50 | 1020-1510 | \$ 20.80 | 1020-1610 | \$ 45.70 | 1020-1710 | \$ 83.20 |
| 8 1/2 x 14 | | | 1020-1512 | 23.60 | 1020-1612 | 52.80 | 1020-1712 | 96.60 |
| 9 x 12 | 1020-1214 | 6.30 | 1020-1514 | 23.20 | 1020-1614 | 51.20 | 1020-1714 | 94.60 |
| 11 x 17 | 1020-1216 | 7.50 | 1020-1516 | 39.90 | 1020-1616 | 89.10 | 1020-1716 | 166.00 |
| 12 x 18 | 1020-1218 | 7.70 | 1020-1518 | 41.60 | 1020-1618 | 94.00 | 1020-1718 | 175.40 |
| 17 x 22 | 1020-1220 | 12.20 | 1020-1520 | 74.00 | 1020-1620 | 169.60 | 1020-1720 | 318.80 |
| 18 x 24 | 1020-1222 | 13.90 | 1020-1522 | 80.20 | 1020-1622 | 185.50 | 1020-1722 | 350.10 |
| 22 x 34 | 1020-1226 | 24.80 | 1020-1526 | 146.10 | 1020-1626 | 337.50 | 1020-1726 | 637.60 |
| 24 x 36 | 1020-1228 | 28.20 | 1020-1528 | 153.10 | 1020-1628 | 369.00 | 1020-1728 | 673.30 |
| 24 x 42 | | | 1020-1530 | 199.60 | 1020-1630 | 405.80 | | |
| 30 x 42 | 1020-1236 | 33.30 | 1020-1536 | 228.60 | 1020-1636 | 501.70 | | |
| 34 x 44 | | | 1020-1540 | 290.10 | 1020-1640 | 633.00 | | |
| 36 x 48 | | | 1020-1544 | 313.50 | 1020-1644 | 690.20 | | |

| METRIC SHEET SIZE (millimeters) | D.I.N. CODE | STOCK NO. | 100 SHEETS | STOCK NO. | 250 SHEETS | STOCK NO. | 500 SHEETS |
|---------------------------------|-------------|-----------|------------|-----------|------------|-----------|------------|
| 210 x 297 | A4 | 1020-1545 | \$ 21.50 | 1020-1645 | \$ 46.90 | 1020-1745 | \$ 85.50 |
| 297 x 420 | A3 | 1020-1546 | 40.90 | 1020-1646 | 92.10 | 1020-1746 | 170.70 |
| 420 x 594 | A2 | 1020-1547 | 78.20 | 1020-1647 | 179.70 | 1020-1747 | 339.30 |
| 594 x 841 | A1 | 1020-1548 | 154.20 | 1020-1648 | 357.90 | 1020-1748 | 677.90 |
| 841 x 1189 | A0 | 1020-1549 | 307.00 | 1020-1649 | 674.70 | | |
| 707 x 1000 | B1 | 1020-1550 | 226.30 | 1020-1650 | 472.30 | | |

| ROLLS WIDTH (inches) | STOCK NO. | 5 YARDS | STOCK NO. | 10 YARDS | STOCK NO. | 20 YARDS | STOCK NO. | 50 YARDS | STOCK NO. | 100 YARDS |
|----------------------|-----------|---------|-----------|----------|-----------|----------|-----------|----------|-----------|-----------|
| 12 | 1010-1111 | \$ 5.20 | 1010-1112 | \$ 10.60 | 1010-1113 | \$ 16.70 | 1010-1114 | \$ 38.70 | | |
| 18 | 1010-1120 | 7.70 | 1010-1121 | 15.40 | 1010-1122 | 25.20 | 1010-1123 | 50.10 | | |
| 24 | 1010-1128 | 10.20 | 1010-1129 | 20.20 | 1010-1130 | 32.10 | 1010-1131 | 77.00 | 1010-1132 | \$153.80 |
| 30 | 1010-1137 | 13.00 | 1010-1138 | 26.10 | 1010-1139 | 37.10 | 1010-1140 | 86.30 | 1010-1141 | 172.70 |
| 34 | | | | | 1010-1144 | 42.30 | 1010-1145 | 93.80 | 1010-1146 | 187.30 |
| 36 | 1010-1149 | 15.90 | 1010-1150 | 31.60 | 1010-1151 | 42.60 | 1010-1152 | 95.50 | 1010-1153 | 198.80 |
| 42 | 1010-1158 | 18.40 | 1010-1159 | 36.60 | 1010-1160 | 51.60 | 1010-1161 | 115.90 | | |
| 48 | | | | | 1010-1163 | 59.40 | 1010-1164 | 132.20 | | |
| 54 | | | | | 1010-1166 | 66.90 | 1010-1167 | 149.70 | | |
| 60 | | | | | 1010-1169 | 74.00 | 1010-1170 | 171.10 | | |
| 72 | | | | | 1010-1172 | 88.80 | 1010-1173 | 207.20 | | |

1020[®]

VELLUM Unprinted

20 lbs (80 gms/meter²)

1020[®] 20-pound vellum is a heavier weight version of legendary 1000H[®]. Added weight and feel are desirable in some cases where additional weight is required.

| SHEET SIZE (inches) | STOCK NO. | 10 SHEETS | STOCK NO. | 100 SHEETS | STOCK NO. | 250 SHEETS | STOCK NO. | 500 SHEETS |
|---------------------|-----------|-----------|-----------|------------|-----------|------------|-----------|------------|
| 8½ x 11 | 1220-1210 | \$ 7.00 | 1220-1510 | \$ 24.80 | 1220-1610 | \$ 56.20 | 1220-1710 | \$ 103.70 |
| 8½ x 14 | | | 1220-1512 | 28.50 | 1220-1612 | 65.20 | 1220-1712 | 121.40 |
| 9 x 12 | | | 1220-1514 | 27.60 | 1220-1614 | 62.60 | 1220-1714 | 117.00 |
| 11 x 17 | 1220-1216 | 8.80 | 1220-1516 | 48.10 | 1220-1616 | 110.00 | 1220-1716 | 206.50 |
| 12 x 18 | 1220-1218 | 10.00 | 1220-1518 | 50.60 | 1220-1618 | 116.30 | 1220-1718 | 220.30 |
| 17 x 22 | 1220-1220 | 16.30 | 1220-1520 | 90.80 | 1220-1620 | 211.40 | 1220-1720 | 402.10 |
| 18 x 24 | 1220-1222 | 17.60 | 1220-1522 | 98.70 | 1220-1622 | 230.60 | 1220-1722 | 439.70 |
| 22 x 34 | 1220-1226 | 31.80 | 1220-1526 | 179.70 | 1220-1626 | 420.50 | 1220-1726 | 803.80 |
| 24 x 36 | 1220-1228 | 34.70 | 1220-1528 | 187.40 | 1220-1628 | 458.80 | 1220-1728 | 846.20 |
| 30 x 42 | 1220-1236 | 43.20 | 1220-1536 | 289.40 | 1220-1636 | 630.50 | | |
| 34 x 44 | | | 1220-1540 | 355.40 | 1220-1640 | 795.60 | | |
| 36 x 48 | | | 1220-1544 | 383.80 | 1220-1644 | 866.20 | | |

| METRIC SHEET SIZE (millimeters) | D.I.N. CODE | STOCK NO. | 100 SHEETS | STOCK NO. | 250 SHEETS | STOCK NO. | 500 SHEETS |
|---------------------------------|-------------|-----------|------------|-----------|------------|-----------|------------|
| 210 x 297 | A4 | 1220-1545 | \$ 27.60 | 1220-1645 | \$ 62.60 | 1220-1745 | \$ 117.10 |
| 297 x 420 | A3 | 1220-1546 | 49.90 | 1220-1646 | 114.20 | 1220-1746 | 215.40 |
| 420 x 594 | A2 | 1220-1547 | 96.60 | 1220-1647 | 225.50 | 1220-1747 | 430.80 |
| 594 x 841 | A1 | 1220-1548 | 190.60 | 1220-1648 | 448.30 | 1220-1748 | 860.10 |
| 841 x 1189 | A0 | 1220-1549 | 365.20 | 1220-1649 | 819.20 | | |
| 707 x 1000 | B1 | 1220-1550 | 276.80 | 1220-1650 | 599.50 | | |

| ROLLS WIDTH (inches) | STOCK NO. | 5 YARDS | STOCK NO. | 20 YARDS | STOCK NO. | 50 YARDS |
|----------------------|-----------|----------|-----------|----------|-----------|----------|
| 18 | | | 1210-1122 | \$ 33.10 | 1210-1123 | \$ 62.60 |
| 24 | 1210-1128 | \$ 13.00 | 1210-1130 | 43.70 | 1210-1131 | 100.10 |
| 30 | 1210-1137 | 15.10 | 1210-1139 | 48.10 | 1210-1140 | 112.70 |
| 36 | 1210-1149 | 16.70 | 1210-1151 | 53.30 | 1210-1152 | 125.90 |
| 42 | | | 1210-1160 | 62.20 | 1210-1161 | 146.50 |
| 60 | | | 1210-1169 | 93.30 | 1210-1170 | 220.50 |

1000H[®]

VELLUM Printed

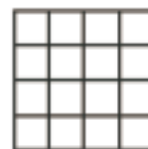
Fade-out[®] Grid Sheets

16 lbs (68 gms/meter²)

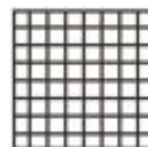
1000H[®] 16-pound vellum is the finest product you can buy for manual drafting. This 100% new cotton fiber media is transparentized without solvents to produce the proper translucency as well as legendary Clearprint archival quality, strength, erasability and redraw characteristics.

| SHEET SIZE (inches) | 10 SHEETS | 4 x 4 GRID STOCK NO. | 8 x 8 GRID STOCK NO. | 10 x 10 GRID STOCK NO. | Isometric GRID STOCK NO. | 2 mm GRID STOCK NO. |
|---------------------|-----------|----------------------|----------------------|------------------------|--------------------------|---------------------|
| 8 1/2 x 11 | \$ 6.50 | 1020-4210 | 1020-2210 | 1020-3210 | 1020-5210 | 1020-6210 |
| 11 x 17 | 8.60 | 1020-4216 | 1020-2216 | 1020-3216 | 1020-5216 | 1020-6216 |
| 12 x 18 | 8.80 | 1020-4218 | 1020-2218 | 1020-3218 | 1020-5218 | 1020-6218 |
| 17 x 22 | 15.60 | 1020-4220 | 1020-2220 | 1020-3220 | 1020-5220 | 1020-6220 |
| 18 x 24 | 16.70 | 1020-4222 | 1020-2222 | 1020-3222 | 1020-5222 | 1020-6222 |
| 22 x 34 | 30.50 | 1020-4226 | 1020-2226 | 1020-3226 | 1020-5226 | 1020-6226 |
| 24 x 36 | 33.30 | 1020-4228 | 1020-2228 | 1020-3228 | 1020-5228 | 1020-6228 |
| 30 x 42 | 41.20 | 1020-4236 | 1020-2236 | 1020-3236 | 1020-5236 | 1020-6236 |
| 100 SHEETS | | | | | | |
| 8 1/2 x 11 | \$ 27.30 | 1020-4510 | 1020-2510 | 1020-3510 | 1020-5510 | 1020-6510 |
| 8 1/2 x 14 | 31.40 | 1020-4512 | 1020-2512 | 1020-3512 | 1020-5512 | 1020-6512 |
| 11 x 17 | 52.50 | 1020-4516 | 1020-2516 | 1020-3516 | 1020-5516 | 1020-6516 |
| 12 x 18 | 55.20 | 1020-4518 | 1020-2518 | 1020-3518 | 1020-5518 | 1020-6518 |
| 17 x 22 | 99.40 | 1020-4520 | 1020-2520 | 1020-3520 | 1020-5520 | 1020-6520 |
| 18 x 24 | 107.80 | 1020-4522 | 1020-2522 | 1020-3522 | 1020-5522 | 1020-6522 |
| 22 x 34 | 196.60 | 1020-4526 | 1020-2526 | 1020-3526 | 1020-5526 | 1020-6526 |
| 24 x 36 | 213.80 | 1020-4528 | 1020-2528 | 1020-3528 | 1020-5528 | 1020-6528 |
| 30 x 42 | 317.80 | 1020-4536 | 1020-2536 | 1020-3536 | 1020-5536 | 1020-6536 |
| 36 x 48 | 421.50 | 1020-4544 | 1020-2544 | 1020-3544 | 1020-5544 | 1020-6544 |
| 250 SHEETS | | | | | | |
| 8 1/2 x 11 | \$ 61.50 | 1020-4610 | 1020-2610 | 1020-3610 | 1020-5610 | 1020-6610 |
| 8 1/2 x 14 | 71.60 | 1020-4612 | 1020-2612 | 1020-3612 | 1020-5612 | 1020-6612 |
| 11 x 17 | 120.80 | 1020-4616 | 1020-2616 | 1020-3616 | 1020-5616 | 1020-6616 |
| 12 x 18 | 128.70 | 1020-4618 | 1020-2618 | 1020-3618 | 1020-5618 | 1020-6618 |
| 17 x 22 | 232.70 | 1020-4620 | 1020-2620 | 1020-3620 | 1020-5620 | 1020-6620 |
| 18 x 24 | 254.20 | 1020-4622 | 1020-2622 | 1020-3622 | 1020-5622 | 1020-6622 |
| 22 x 34 | 463.50 | 1020-4626 | 1020-2626 | 1020-3626 | 1020-5626 | 1020-6626 |
| 24 x 36 | 505.60 | 1020-4628 | 1020-2628 | 1020-3628 | 1020-5628 | 1020-6628 |
| 30 x 42 | 701.60 | 1020-4636 | 1020-2636 | 1020-3636 | 1020-5636 | 1020-6636 |
| 36 x 48 | 960.30 | 1020-4644 | 1020-2644 | 1020-3644 | 1020-5644 | 1020-6644 |
| 500 SHEETS | | | | | | |
| 8 1/2 x 11 | \$ 114.70 | 1020-4710 | 1020-2710 | 1020-3710 | 1020-5710 | 1020-6710 |
| 8 1/2 x 14 | 134.10 | 1020-4712 | 1020-2712 | 1020-3712 | 1020-5712 | 1020-6712 |
| 11 x 17 | 229.40 | 1020-4716 | 1020-2716 | 1020-3716 | 1020-5716 | 1020-6716 |
| 12 x 18 | 244.90 | 1020-4718 | 1020-2718 | 1020-3718 | 1020-5718 | 1020-6718 |
| 17 x 22 | 444.70 | 1020-4720 | 1020-2720 | 1020-3720 | 1020-5720 | 1020-6720 |
| 18 x 24 | 487.00 | 1020-4722 | 1020-2722 | 1020-3722 | 1020-5722 | 1020-6722 |
| 22 x 34 | 888.90 | 1020-4726 | 1020-2726 | 1020-3726 | 1020-5726 | 1020-6726 |
| 24 x 36 | 974.50 | 1020-4728 | 1020-2728 | 1020-3728 | 1020-5728 | 1020-6728 |

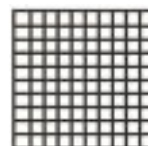
GRID CHOICES



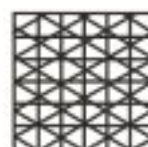
4 x 4 GRID



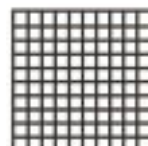
8 x 8 GRID



10 x 10 GRID



ISOMETRIC GRID



2 MM GRID

GRIDS NOT ACTUAL SIZE.

1000H[®]

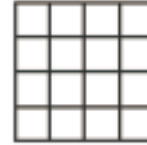
VELLUM Printed Fade-out[®] Grid Rolls

16 lbs (68 gms/meter²)

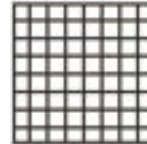
1000H[®] 16-pound vellum is the finest product you can buy for manual drafting. This 100% new cotton fiber media is transparentized without solvents to produce the proper translucency as well as legendary Clearprint archival quality, strength, erasability and redraw characteristics.

| ROLLS WIDTH (inches) | LENGTH 5 Yds | 4 x 4 GRID STOCK NO. | 8 x 8 GRID STOCK NO. | 10 x 10 GRID STOCK NO. | 2 mm GRID STOCK NO. |
|----------------------|----------------|----------------------|----------------------|------------------------|---------------------|
| 18 | \$10.70 | 1010-4120 | 1010-2120 | 1010-3120 | |
| 24 | 15.10 | 1010-4128 | 1010-2128 | 1010-3128 | |
| 30 | 16.70 | 1010-4137 | 1010-2137 | 1010-3137 | |
| 36 | 18.80 | 1010-4149 | 1010-2149 | 1010-3149 | |
| 42 | 22.00 | 1010-4158 | 1010-2158 | 1010-3158 | 1010-6158 |
| | 10 Yds | | | | |
| 24 | \$ 30.10 | 1010-4129 | 1010-2129 | 1010-3129 | |
| 30 | 33.30 | 1010-4138 | 1010-2138 | 1010-3138 | |
| 36 | 37.50 | 1010-4150 | 1010-2150 | 1010-3150 | |
| | 20 Yds | | | | |
| 18 | \$ 35.50 | 1010-4122 | 1010-2122 | 1010-3122 | |
| 24 | 47.20 | 1010-4130 | 1010-2130 | 1010-3130 | |
| 30 | 52.50 | 1010-4139 | 1010-2139 | 1010-3139 | |
| 36 | 58.60 | 1010-4151 | 1010-2151 | 1010-3151 | |
| 42 | 68.50 | 1010-4160 | 1010-2160 | 1010-3160 | 1010-6160 |
| 54 | 87.70 | | 1010-2166 | 1010-3166 | |
| 60 | 101.10 | | 1010-2169 | 1010-3169 | |
| | 50 Yds | | | | |
| 24 | \$ 110.20 | 1010-4131 | 1010-2131 | 1010-3131 | |
| 30 | 124.10 | 1010-4140 | 1010-2140 | 1010-3140 | |
| 36 | 140.10 | 1010-4152 | 1010-2152 | 1010-3152 | |
| 42 | 163.30 | 1010-4161 | 1010-2161 | 1010-3161 | 1010-6161 |
| 54 | 209.80 | | 1010-2167 | 1010-3167 | |
| 60 | 252.50 | | 1010-2170 | 1010-3170 | |
| | 100 Yds | | | | |
| 24 | \$ 220.50 | 1010-4132 | 1010-2132 | 1010-3132 | |
| 30 | 248.30 | 1010-4141 | 1010-2141 | 1010-3141 | |
| 36 | 280.30 | 1010-4153 | 1010-2153 | 1010-3153 | |

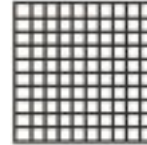
GRID CHOICES



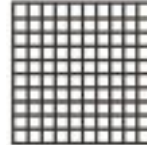
4 x 4 GRID



8 x 8 GRID



10 x 10 GRID



2 MM GRID

GRIDS NOT ACTUAL SIZE.

CALL FOR QUOTES ON METRIC TOPO.

1020[®]
VELLUM Printed
Fade-out[®] Grid
20 lbs (80 gms/meter²)

1020[®] 20-pound vellum is a heavier weight version of legendary 1000H[®]. Added weight and feel are desirable in some cases where additional weight is required.

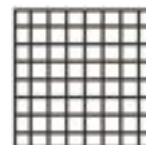
| SHEET SIZE (inches) | 100 SHEETS | 4 x 4 GRID STOCK NO. | 8 x 8 GRID STOCK NO. | 10 x 10 GRID STOCK NO. | 2 mm GRID STOCK NO. |
|---------------------|-------------------|----------------------|----------------------|------------------------|---------------------|
| 8 1/2 x 11 | \$ 31.80 | 1220-4510 | 1220-2510 | 1220-3510 | 1220-6510 |
| 11 x 17 | 61.50 | 1220-4516 | 1220-2516 | 1220-3516 | 1220-6516 |
| 17 x 22 | 117.00 | 1220-4520 | 1220-2520 | 1220-3520 | 1220-6520 |
| 18 x 24 | 127.00 | 1220-4522 | 1220-2522 | 1220-3522 | 1220-6522 |
| 22 x 34 | 232.20 | 1220-4526 | 1220-2526 | 1220-3526 | 1220-6526 |
| 24 x 36 | 252.90 | 1220-4528 | 1220-2528 | 1220-3528 | 1220-6528 |
| 25 x 37 | 296.00 | 1220-4534 | 1220-2534 | 1220-3534 | 1220-6534 |
| 30 x 42 | 372.80 | 1220-4536 | 1220-2536 | 1220-3536 | 1220-6536 |
| | 250 SHEETS | | | | |
| 8 1/2 x 11 | \$ 72.90 | 1220-4610 | 1220-2610 | 1220-3610 | 1220-6610 |
| 11 x 17 | 144.80 | 1220-4616 | 1220-2616 | 1220-3616 | 1220-6616 |
| 17 x 22 | 276.00 | 1220-4620 | 1220-2620 | 1220-3620 | 1220-6620 |
| 18 x 24 | 302.00 | 1220-4622 | 1220-2622 | 1220-3622 | 1220-6622 |
| 22 x 34 | 551.90 | 1220-4626 | 1220-2626 | 1220-3626 | 1220-6626 |
| 24 x 36 | 603.80 | 1220-4628 | 1220-2628 | 1220-3628 | 1220-6628 |
| 25 x 37 | 683.50 | 1220-4634 | 1220-2634 | 1220-3634 | 1220-6634 |
| 30 x 42 | 839.50 | 1220-4636 | 1220-2636 | 1220-3636 | 1220-6636 |
| | 500 SHEETS | | | | |
| 8 1/2 x 11 | \$ 136.80 | 1220-4710 | 1220-2710 | 1220-3710 | 1220-6710 |
| 11 x 17 | 276.00 | 1220-4716 | 1220-2716 | 1220-3716 | 1220-6716 |
| 17 x 22 | 531.70 | 1220-4720 | 1220-2720 | 1220-3720 | 1220-6720 |
| 18 x 24 | 583.40 | 1220-4722 | 1220-2722 | 1220-3722 | 1220-6722 |
| 22 x 34 | 1066.50 | 1220-4726 | 1220-2726 | 1220-3726 | 1220-6726 |
| 24 x 36 | 1169.30 | 1220-4728 | 1220-2728 | 1220-3728 | 1220-6728 |
| 25 x 37 | 1292.80 | 1220-4734 | 1220-2734 | 1220-3734 | 1220-6734 |

| ROLLS WIDTH (inches) | 20 Yds | 4 x 4 GRID STOCK NO. | 8 x 8 GRID STOCK NO. | 10 x 10 GRID STOCK NO. | 2 mm GRID STOCK NO. |
|----------------------|---------------|----------------------|----------------------|------------------------|---------------------|
| 24 | \$ 56.40 | 1210-4130 | 1210-2130 | 1210-3130 | |
| 30 | 62.60 | 1210-4139 | 1210-2139 | 1210-3139 | |
| 36 | 70.40 | 1210-4151 | 1210-2151 | 1210-3151 | |
| 42 | 82.30 | 1210-4160 | 1210-2160 | 1210-3160 | 1210-6160 |
| 54 | 105.20 | | 1210-2166 | 1210-3166 | |
| 60 | 127.30 | | 1210-2169 | | |
| | 50 Yds | | | | |
| 24 | \$ 134.10 | 1210-4131 | 1210-2131 | 1210-3131 | |
| 30 | 150.70 | 1210-4140 | 1210-2140 | 1210-3140 | |
| 36 | 168.20 | 1210-4152 | 1210-2152 | 1210-3152 | |
| 42 | 196.20 | 1210-4161 | 1210-2161 | 1210-3161 | 1210-6161 |

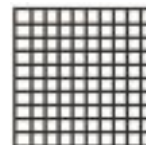
GRID CHOICES



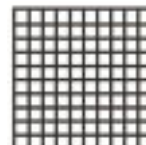
4 x 4 GRID



8 x 8 GRID



10 x 10 GRID



2 MM GRID

GRIDS NOT ACTUAL SIZE.

CALL FOR QUOTES ON METRIC TOPO.

DESIGN & SKETCH PADS

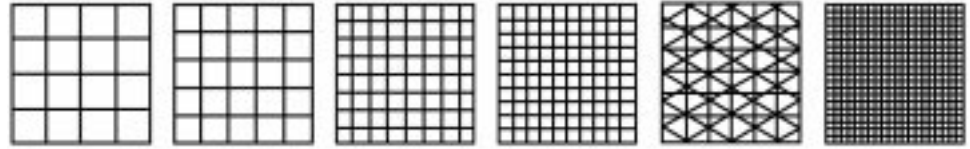
50 sheet pads – translucent vellum
16LBS. 100% NEW COTTON FIBER



UNPRINTED PADS

| SIZE (inches) | 1000HP | STOCK NO. |
|---------------|----------|-----------|
| 8 1/2 x 11 | \$ 11.30 | 1000-1410 |
| 11 x 17 | 22.30 | 1000-1416 |
| 12 x 18 | 24.70 | 1000-1418 |
| 17 x 22 | 41.90 | 1000-1420 |
| 18 x 24 | 46.10 | 1000-1422 |

GRID CHOICES



4 x 4 GRID 5 x 5 GRID 8 x 8 GRID 10 x 10 GRID ISOMETRIC GRID 1 MM GRID
GRIDS NOT ACTUAL SIZE.

1000HP PRINTED PADS FADE-OUT® BLUE GRID

| SIZE (inches) | PRINTED GRID | 4 x 4 GRID STOCK NO. | 5 x 5 GRID STOCK NO. | 8 x 8 GRID STOCK NO. | 10 x 10 GRID STOCK NO. | Isometric GRID STOCK NO. | 1 mm GRID STOCK NO. |
|---------------|--------------|----------------------|----------------------|----------------------|------------------------|--------------------------|---------------------|
| 8 1/2 x 11 | \$ 14.70 | 1000-4410 | 1000-8410 | 1000-2410 | 1000-3410 | 1000-5410 | 1000-7410 |
| 11 x 17 | 27.80 | 1000-4416 | 1000-8416 | 1000-2416 | 1000-3416 | 1000-5416 | 1000-7416 |
| 17 x 22 | 56.80 | 1000-4420 | 1000-8420 | 1000-2420 | 1000-3420 | 1000-5420 | 1000-7420 |
| 18 x 24 | 60.80 | 1000-4422 | | 1000-2422 | 1000-3422 | 1000-5422 | |

1025® VELLUM Unprinted 22 lbs (90 gms/meter²)

CLEARPRINT 1025 PAPERCLOTH® is especially recommended for quality ink drawings. This extremely durable 22-pound vellum is made from 100% new cotton fibers. Papercloth® is a special favorite of architects and artists for ink drawings and brush work.

| SHEET SIZE (inches) | STOCK NO. | 10 SHEETS | STOCK NO. | 100 SHEETS | STOCK NO. | 250 SHEETS | STOCK NO. | 500 SHEETS |
|---------------------|-----------|-----------|-----------|------------|-----------|------------|-----------|------------|
| 8 1/2 x 11 | 1320-1210 | \$ 7.50 | 1320-1510 | \$ 27.10 | 1320-1610 | \$ 61.10 | 1320-1710 | \$ 114.50 |
| 8 1/2 x 14 | | | 1320-1512 | 30.50 | 1320-1612 | 69.70 | 1320-1712 | 131.70 |
| 11 x 17 | 1320-1216 | 9.80 | 1320-1516 | 51.20 | 1320-1616 | 120.00 | 1320-1716 | 226.70 |
| 12 x 18 | 1320-1218 | 10.70 | 1320-1518 | 54.20 | 1320-1618 | 125.80 | 1320-1718 | 239.70 |
| 17 x 22 | 1320-1220 | 18.00 | 1320-1520 | 97.40 | 1320-1620 | 229.00 | 1320-1720 | 438.00 |
| 18 x 24 | 1320-1222 | 19.30 | 1320-1522 | 106.30 | 1320-1622 | 250.20 | 1320-1722 | 481.70 |
| 22 x 34 | 1320-1226 | 35.40 | 1320-1526 | 193.50 | 1320-1626 | 456.50 | 1320-1726 | 876.60 |
| 24 x 36 | 1320-1228 | 38.50 | 1320-1528 | 210.70 | 1320-1628 | 499.60 | 1320-1728 | 962.60 |
| 30 x 42 | | | 1320-1536 | 310.50 | 1320-1636 | 686.60 | | |
| 36 x 48 | | | 1320-1544 | 414.50 | 1320-1644 | 947.50 | | |

| ROLLS WIDTH (inches) | STOCK NO. | 50 YARDS | STOCK NO. | 100 YARDS |
|----------------------|-----------|----------|-----------|-----------|
| 24 | 1310-1131 | \$112.00 | 1310-1132 | \$224.10 |
| 30 | 1310-1140 | 123.40 | | |
| 36 | 1310-1152 | 138.20 | 1310-1153 | 276.20 |
| 42 | 1310-1161 | 159.80 | | |

1000H[®]

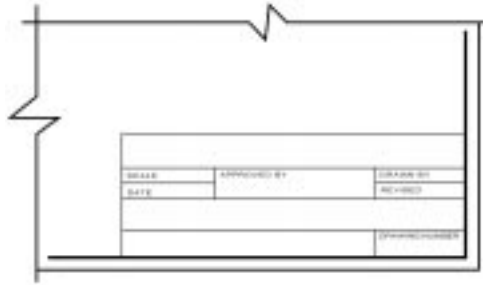
TITLE BLOCK/BORDER

| ENGINEER & ARCHITECT NON-GRIDDED (1000HTS) | | | | | | | | |
|---|--------------|--------------|--------------|---------------|--------------|---------------|--------------|---------------|
| SHEET SIZE (inches) | STOCK NO. | 10 SHEETS | STOCK NO. | 100 SHEETS | STOCK NO. | 250 SHEETS | STOCK NO. | 500 SHEETS |
| 8 1/2 x 11 | 1022-1210 | \$ 6.50 | 1022-1510 | \$ 35.70 | 1022-1610 | \$ 83.20 | 1022-1710 | \$ 157.30 |
| 11 x 17 | 1022-1216 | 8.60 | 1022-1516 | 53.10 | 1022-1616 | 123.10 | 1022-1716 | 233.30 |
| 17 x 22 | 1022-1220 | 15.60 | 1022-1520 | 91.70 | 1022-1620 | 213.50 | 1022-1720 | 406.40 |
| 18 x 24 | 1022-1222 | 16.70 | 1022-1522 | 100.10 | 1022-1622 | 234.30 | 1022-1722 | 449.20 |
| 22 x 34 | 1022-1226 | 30.50 | 1022-1526 | 180.70 | 1022-1626 | 424.20 | 1022-1726 | 810.20 |
| 24 x 36 | 1022-1228 | 33.30 | 1022-1528 | 196.60 | 1022-1628 | 463.50 | 1022-1728 | 888.90 |

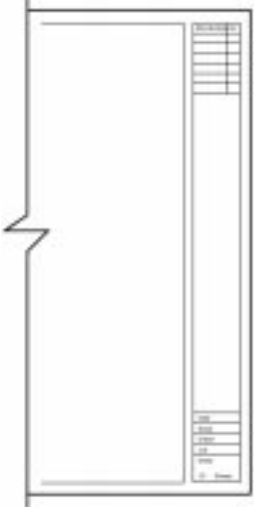
| ARCHITECT NON-GRIDDED (1000HTS-A) | | | | | | | | |
|--|-----------|----------|-----------|-----------|-----------|-----------|-----------|-----------|
| 18 x 24 | 1021-1222 | \$ 16.70 | 1021-1522 | \$ 100.10 | 1021-1622 | \$ 234.30 | 1021-1722 | \$ 449.20 |
| 24 x 36 | 1021-1228 | 33.30 | 1021-1528 | 196.60 | 1021-1628 | 463.50 | 1021-1728 | 888.90 |
| 30 x 42 | 1021-1236 | 41.20 | 1021-1536 | 268.20 | 1021-1636 | 578.40 | | |

| ENGINEER & ARCHITECT GRIDDED (1000HTS) | | | | | | | | | | | | |
|---|---------------|-----------------|--------------|---------------|-----------------|---------------|---------------|-----------------|---------------|---------------|-----------------|---------------|
| SHEET SIZE (inches) | 8 x 8 GRID | 10 x 10 GRID | 10 SHEETS | 8 x 8 GRID | 10 x 10 GRID | 100 SHEETS | 8 x 8 GRID | 10 x 10 GRID | 250 SHEETS | 8 x 8 GRID | 10 x 10 GRID | 500 SHEETS |
| | STOCK NO. | STOCK NO. | | STOCK NO. | STOCK NO. | | STOCK NO. | STOCK NO. | | STOCK NO. | STOCK NO. | |
| 8 1/2 x 11 | 1022-2210 | 1022-3210 | \$7.00 | 1022-2510 | 1022-3510 | \$43.20 | 1022-2610 | 1022-3610 | \$102.00 | 1022-2710 | 1022-3710 | \$195.40 |
| 11 x 17 | 1022-2216 | 1022-3216 | 10.00 | 1022-2516 | 1022-3516 | 67.70 | 1022-2616 | 1022-3616 | 159.10 | 1022-2716 | 1022-3716 | 305.60 |
| 12 x 18 | 1022-2218 | 1022-3218 | 10.20 | 1022-2518 | 1022-3518 | 70.80 | 1022-2618 | 1022-3618 | 168.20 | 1022-2718 | 1022-3718 | 323.30 |
| 17 x 22 | 1022-2220 | 1022-3220 | 17.60 | 1022-2520 | 1022-3520 | 120.20 | 1022-2620 | 1022-3620 | 284.80 | 1022-2720 | 1022-3720 | 549.50 |
| 18 x 24 | 1022-2222 | 1022-3222 | 19.50 | 1022-2522 | 1022-3522 | 130.30 | 1022-2622 | 1022-3622 | 311.10 | 1022-2722 | 1022-3722 | 601.40 |
| 22 x 34 | 1022-2226 | 1022-3226 | 36.30 | 1022-2526 | 1022-3526 | 237.40 | 1022-2626 | 1022-3626 | 565.00 | 1022-2726 | 1022-3726 | 1093.30 |
| 24 x 36 | 1022-2228 | 1022-3228 | 39.90 | 1022-2528 | 1022-3528 | 258.60 | 1022-2628 | 1022-3628 | 618.10 | 1022-2728 | 1022-3728 | 1198.80 |

| ARCHITECT GRIDDED (1000HTS-A) | | | | | | | | |
|--------------------------------------|---------------|--------------|---------------|---------------|---------------|---------------|---------------|---------------|
| SHEETS SIZE (inches) | 8 x 8 GRID | 10 SHEETS | 8 x 8 GRID | 100 SHEETS | 8 x 8 GRID | 250 SHEETS | 8 x 8 GRID | 500 SHEETS |
| | STOCK NO. | | STOCK NO. | | STOCK NO. | | STOCK NO. | |
| 18 x 24 | 1021-2222 | \$19.50 | 1021-2522 | \$130.30 | 1021-2622 | \$311.10 | 1021-2722 | \$601.40 |
| 24 x 36 | 1021-2228 | 39.90 | 1021-2528 | 258.60 | 1021-2628 | 618.10 | 1021-2728 | 1198.80 |
| 30 x 42 | 1021-2236 | 48.40 | 1021-2536 | 325.30 | 1021-2636 | 720.30 | | |



1000HTS



1000HTS-A

1000H[®]

FEDERAL AID SHEETS*

| | SHEET SIZE (inches) | STOCK NO. | 100 SHEETS | STOCK NO. | 500 SHEETS |
|---------|---------------------|-----------|------------|-----------|------------|
| PLATE 2 | 23 x 36 | 1023-3557 | \$ 213.80 | 1023-3757 | \$ 969.60 |
| PLATE 3 | 23 x 36 | 1023-4557 | 213.80 | 1023-4757 | 969.80 |

Plate 2 Double Plan Profile

2 Plan sections, blank, 5.25" x 33.5".
2 Profile sections, 2 x 10 lines/inch, 5" x 32".

Plate 3 Cross Section

Printed grid, 10 x 10 lines/inch, 21" x 33.5".



1000H[®]

PROFILE & CROSS SECTION ROLLS

Grid Color: Orange

| | ROLL WIDTH (inches) | STOCK NO. | 20 YARDS | STOCK NO. | 50 YARDS |
|------|---------------------|-----------|----------|-----------|-----------|
| 1265 | 24 | 1014-2130 | \$ 47.20 | 1014-2131 | \$ 110.20 |
| 1269 | 24 | 1014-3130 | 47.20 | 1014-3131 | 110.20 |
| 1294 | 24 | 1014-4130 | 47.20 | 1014-4131 | 110.20 |

1265 Plan Profile Plate A

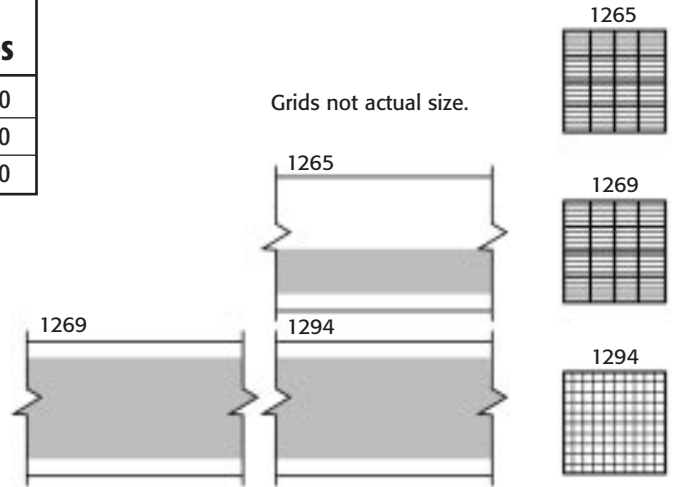
Plan section at top, blank, 12" wide. Profile section at bottom, 4 x 20 lines/inch, 10" wide engraved section, 2" margin at bottom.

1269 Profile Plate A

Printed grid, 4 x 20 lines/inch, 20" wide engraved section, 2" margin at top and bottom.

1294 Cross Section

Printed grid 20" wide, 10 x 10 lines/inch, 2" margin at top and bottom.



1000H[®]

PROFILE & CROSS SECTION ROLLS (Metric)

Grid Color: Orange

| | ROLL WIDTH (inches) | STOCK NO. | 20 YARDS | STOCK NO. | 50 YARDS |
|------|---------------------|-----------|----------|-----------|-----------|
| 1065 | 24 | 1014-5130 | \$ 47.20 | 1014-5131 | \$ 110.20 |
| 1069 | 24 | 1014-6130 | 47.20 | 1014-6131 | 110.20 |
| 1094 | 24 | 1014-7130 | 47.20 | 1014-7131 | 110.20 |

1065 Metric Plan Profile

Engraved section width 280mm. 25mm blank margin at bottom. Grid: 2mm horizontal lines with 20mm accenting. 20mm vertical grid lines with 40mm accenting.

1069 Metric Full Profile

Same as 1065 except engraved section width 560 mm and 25mm blank margin at top and bottom.

1094 Metric Cross Section

Engraved section width 560mm. 25mm blank margin top and bottom. Grid: 2mm with 20mm accenting and 10mm screened accenting.

* Recommended by the U.S. Dept. of Agriculture Office of Public Roads and Rural Engineering.

6120 XV XEROGRAPHIC VELLUM

6120 XV 20-POUND 100% NEW COTTON FIBER, solvent free. Excellent image density. Superior toner adhesion. Resists aging. Environmentally friendly. Will not contaminate xerographic copiers.

| SHEET SIZE (inches) | STOCK NO. | 100 SHEETS | STOCK NO. | 250 SHEETS | STOCK NO. | 500 SHEETS |
|---------------------|-----------|------------|-----------|------------|-----------|------------|
| 8 1/2 x 11 | 6120-1510 | \$20.40 | 6120-1610 | \$46.30 | 6120-1710 | \$85.10 |
| 8 1/2 x 14 | 6120-1512 | 23.50 | 6120-1612 | 53.50 | 6120-1712 | 99.90 |
| 11 x 17 | 6120-1516 | 39.50 | 6120-1616 | 90.50 | 6120-1716 | 169.90 |
| 12 x 18 | 6120-1518 | 41.60 | 6120-1618 | 95.70 | 6120-1718 | 181.30 |
| 17 x 22 | 6120-1520 | 74.70 | 6120-1620 | 173.80 | 6120-1720 | 330.70 |
| 18 x 24 | 6120-1522 | 81.00 | 6120-1622 | 189.60 | 6120-1722 | 361.70 |
| 22 x 34 | 6120-1526 | 147.90 | 6120-1626 | 345.80 | 6120-1726 | 661.20 |
| 24 x 36 | 6120-1528 | 154.20 | 6120-1628 | 377.50 | 6120-1728 | 696.10 |
| 30 x 42 | 6120-1536 | 238.10 | 6120-1636 | 518.80 | | |
| 34 x 44 | 6120-1540 | 292.30 | 6120-1640 | 654.40 | | |
| 36 x 48 | 6120-1544 | 315.90 | 6120-1644 | 712.90 | | |
| A4 DIN | 6120-1545 | 22.70 | 6120-1645 | 51.50 | 6120-1745 | 96.20 |
| A3 DIN | 6120-1546 | 40.90 | 6120-1646 | 93.90 | 6120-1746 | 177.20 |
| A2 DIN | 6120-1547 | 79.40 | 6120-1647 | 185.50 | 6120-1747 | 354.50 |
| A1 DIN | 6120-1548 | 156.90 | 6120-1648 | 368.90 | 6120-1748 | 707.60 |
| A0 DIN | 6120-1549 | 300.50 | 6120-1649 | 673.90 | | |
| B1 DIN | 6120-1550 | 227.80 | 6120-1650 | 493.10 | | |

| ROLL* WIDTH (inches) | STOCK NO. | 500 FEET |
|----------------------|-----------|----------|
| 18 | 6110-1125 | \$177.20 |
| 22 | 6110-1127 | 216.90 |
| 24 | 6110-1133 | 236.50 |
| 30 | 6110-1142 | 295.40 |
| 36 | 6110-1154 | 354.50 |

XEROGRAPHIC

6820 XV XEROGRAPHIC VELLUM

6820XV CLEARPRINT'S NEW GENERATION OF 20-POUND VELLUM. MADE ESPECIALLY FOR USE IN HIGH SPEED DIGITAL PRINTERS & COPIERS. 100% New cotton fiber base. 100% solvent-free. 100% unique & exclusive transparentizing method of design produces crisp, clear images run after run.

| ROLL* WIDTH (inches) | STOCK NO. | 500 FEET | STOCK NO. | 650 FEET |
|----------------------|-----------|----------|-----------|----------|
| 24 | 6810-1175 | \$222.00 | 6810-1191 | \$277.70 |
| 30 | 6810-1176 | 270.90 | 6810-1192 | 339.50 |
| 36 | 6810-1177 | 316.90 | 6810-1193 | 402.10 |

* PLEASE SPECIFY MACHINE MAKE AND MODEL WHEN ORDERING.

6016 XV XEROGRAPHIC VELLUM

6016 XV 16-POUND 100% NEW COTTON FIBER, solvent free. Excellent image density. Superior toner adhesion. Resists aging. Environmentally friendly. Will not contaminate xerographic copiers.

| SHEET SIZE (inches) | STOCK NO. | 100 SHEETS | STOCK NO. | 250 SHEETS | STOCK NO. | 500 SHEETS |
|---------------------|-----------|------------|-----------|------------|-----------|------------|
| 8 1/2 x 11 | 6020-1510 | \$ 17.80 | 6020-1610 | \$ 39.30 | 6020-1710 | \$ 71.90 |
| 8 1/2 x 14 | 6020-1512 | 20.40 | 6020-1612 | 45.60 | 6020-1712 | 83.30 |
| 11 x 17 | 6020-1516 | 34.60 | 6020-1616 | 77.00 | 6020-1716 | 143.40 |
| 12 x 18 | 6020-1518 | 35.90 | 6020-1618 | 81.10 | 6020-1718 | 151.50 |
| 17 x 22 | 6020-1520 | 63.90 | 6020-1620 | 146.50 | 6020-1720 | 275.40 |
| 18 x 24 | 6020-1522 | 69.30 | 6020-1622 | 160.30 | 6020-1722 | 302.50 |
| 22 x 34 | 6020-1526 | 126.20 | 6020-1626 | 291.60 | 6020-1726 | 550.90 |
| 24 x 36 | 6020-1528 | 132.20 | 6020-1628 | 318.70 | 6020-1728 | 581.60 |
| 30 x 42 | 6020-1536 | 197.50 | 6020-1636 | 433.30 | | |
| 34 x 44 | 6020-1540 | 250.70 | 6020-1640 | 546.90 | | |
| 36 x 48 | 6020-1544 | 270.80 | 6020-1644 | 596.30 | | |
| A4 DIN | 6020-1545 | 18.70 | 6020-1645 | 40.50 | 6020-1745 | 73.90 |
| A3 DIN | 6020-1546 | 35.30 | 6020-1646 | 79.50 | 6020-1746 | 147.40 |
| A2 DIN | 6020-1547 | 67.50 | 6020-1647 | 155.20 | 6020-1747 | 293.00 |
| A1 DIN | 6020-1548 | 133.30 | 6020-1648 | 309.10 | 6020-1748 | 585.50 |
| A0 DIN | 6020-1549 | 265.20 | 6020-1649 | 582.80 | | |
| B1 DIN | 6020-1550 | 195.50 | 6020-1650 | 408.00 | | |

| ROLL* WIDTH (inches) | STOCK NO. | 500 FEET |
|----------------------|-----------|-----------|
| 18 | 6010-1125 | \$ 144.80 |
| 22 | 6010-1127 | 176.30 |
| 24 | 6010-1133 | 192.40 |
| 30 | 6010-1142 | 240.60 |
| 36 | 6010-1154 | 288.50 |

6020 XV XEROGRAPHIC VELLUM

6020 XV 20-POUND 100% NEW COTTON FIBER, solvent free. Heavier weight for greater durability. Excellent image density. Superior toner adhesion. Resists aging. Environmentally friendly. Will not contaminate xerographic copiers.

| SHEET SIZE (inches) | STOCK NO. | 100 SHEETS | STOCK NO. | 250 SHEETS | STOCK NO. | 500 SHEETS |
|---------------------|-----------|------------|-----------|------------|-----------|------------|
| 8 1/2 x 11 | 6220-1510 | \$ 21.40 | 6220-1610 | \$ 48.70 | 6220-1710 | \$ 89.40 |
| 8 1/2 x 14 | 6220-1512 | 24.70 | 6220-1612 | 56.20 | 6220-1712 | 104.80 |
| 11 x 17 | 6220-1516 | 41.60 | 6220-1616 | 95.00 | 6220-1716 | 178.40 |
| 12 x 18 | 6220-1518 | 43.70 | 6220-1618 | 100.40 | 6220-1718 | 190.30 |
| 17 x 22 | 6220-1520 | 78.40 | 6220-1620 | 182.50 | 6220-1720 | 347.30 |
| 18 x 24 | 6220-1522 | 85.10 | 6220-1622 | 199.10 | 6220-1722 | 379.80 |
| 22 x 34 | 6220-1526 | 155.20 | 6220-1626 | 363.20 | 6220-1726 | 694.30 |
| 24 x 36 | 6220-1528 | 162.00 | 6220-1628 | 396.30 | 6220-1728 | 730.90 |
| 30 x 42 | 6220-1536 | 250.10 | 6220-1636 | 544.70 | | |
| 34 x 44 | 6220-1540 | 307.00 | 6220-1640 | 687.20 | | |
| 36 x 48 | 6220-1544 | 331.60 | 6220-1644 | 748.50 | | |
| A4 DIN | 6220-1545 | 23.90 | 6220-1645 | 54.10 | 6220-1746 | 101.10 |
| A3 DIN | 6220-1546 | 43.00 | 6220-1646 | 98.70 | 6220-1747 | 186.10 |
| A2 DIN | 6220-1547 | 83.30 | 6220-1647 | 194.80 | 6220-1748 | 372.20 |
| A1 DIN | 6220-1548 | 164.10 | 6220-1648 | 387.30 | 6220-1749 | 743.00 |
| A0 DIN | 6220-1549 | 315.50 | 6220-1649 | 707.70 | | |
| B1 DIN | 6220-1550 | 239.10 | 6220-1650 | 517.80 | | |

| ROLL* WIDTH (inches) | STOCK NO. | 500 FEET |
|----------------------|-----------|-----------|
| 18 | 6210-1125 | \$ 186.10 |
| 22 | 6210-1127 | 227.70 |
| 24 | 6210-1133 | 248.30 |
| 30 | 6210-1142 | 310.30 |
| 36 | 6210-1154 | 372.20 |

* PLEASE SPECIFY MACHINE MAKE AND MODEL WHEN ORDERING.

6520 EXV ERASABLE XEROGRAPHIC VELLUM

6520 EXV 20-POUND 100% NEW COTTON FIBER. Easy toner erasability while maintaining toner integrity. Excellent image density. Superior toner adhesion. Resists aging. Environmentally friendly. Will not contaminate xerographic copiers.

| SHEET SIZE (inches) | STOCK NO. | 100 SHEETS | STOCK NO. | 250 SHEETS | STOCK NO. | 500 SHEETS |
|---------------------|-----------|------------|-----------|------------|-----------|------------|
| 18 x 24 | 6520-1522 | \$104.00 | 6520-1622 | \$249.60 | 6520-1722 | \$504.10 |
| 22 x 34 | 6520-1526 | 181.30 | 6520-1626 | 434.90 | 6520-1726 | 879.00 |
| 24 x 36 | 6520-1528 | 203.50 | 6520-1628 | 488.30 | 6520-1728 | 986.90 |

| ROLL* WIDTH (inches) | STOCK NO. | 500 FEET |
|----------------------|-----------|----------|
| 18 | 6510-1125 | \$212.50 |
| 24 | 6510-1133 | 276.00 |
| 30 | 6510-1142 | 334.30 |
| 36 | 6510-1154 | 397.50 |

3018 XB XEROGRAPHIC BOND

3018 XB 18-POUND TRANSLUCENT BOND. Excellent for economical reprints. Excellent image density. Superior toner adhesion.

| SHEET SIZE (inches) | STOCK NO. | 100 SHEETS | STOCK NO. | 250 SHEETS | STOCK NO. | 500 SHEETS |
|---------------------|-----------|------------|-----------|------------|-----------|------------|
| 8 1/2 x 11 | 3020-1510 | \$8.70 | 3020-1610 | \$18.30 | 3020-1710 | \$33.00 |
| 11 x 17 | 3020-1516 | 14.40 | 3020-1616 | 33.20 | 3020-1716 | 63.10 |
| 17 x 22 | 3020-1520 | 26.00 | 3020-1620 | 62.10 | 3020-1720 | 125.20 |
| 18 x 24 | 3020-1522 | 29.80 | 3020-1622 | 67.80 | 3020-1722 | 137.40 |
| 22 x 34 | 3020-1526 | 54.90 | 3020-1626 | 115.40 | 3020-1726 | 231.00 |
| 24 x 36 | 3020-1528 | 62.10 | 3020-1628 | 129.70 | 3020-1728 | 267.80 |
| 30 x 42 | 3020-1536 | 80.60 | 3020-1636 | 189.20 | | |
| 34 x 44 | 3020-1540 | 95.20 | | | | |
| 36 x 48 | 3020-1544 | 109.20 | | | | |

| ROLL* WIDTH (inches) | STOCK NO. | 50 YARDS | STOCK NO. | 500 FEET |
|----------------------|-----------|----------|-----------|----------|
| 18 | | | 3010-1125 | \$ 72.30 |
| 22 | | | 3010-1127 | 86.40 |
| 24 | 3010-1131 | \$33.30 | 3010-1133 | 89.50 |
| 30 | 3010-1140 | 39.00 | | |
| 36 | 3010-1152 | 47.50 | 3010-1154 | 133.50 |
| 42 | 3010-1161 | 54.80 | | |

3020 XB XEROGRAPHIC BOND

3020 XB 20-POUND BRIGHT WHITE OPAQUE BOND. Creates a high contrast background for easy reading. Superior toner adhesion. Economical for quick check prints.

| SHEET SIZE (inches) | STOCK NO. | 100 SHEETS | STOCK NO. | 250 SHEETS | STOCK NO. | 500 SHEETS |
|---------------------|-----------|------------|-----------|------------|-----------|------------|
| 8 1/2 x 11 | 3120-1510 | \$6.40 | 3120-1610 | \$12.10 | 3120-1710 | \$22.90 |
| 11 x 17 | 3120-1516 | 10.90 | 3120-1616 | 24.90 | 3120-1716 | 50.90 |
| 12 x 18 | 3120-1518 | 11.20 | 3120-1618 | 28.50 | 3120-1718 | 54.70 |
| 17 x 22 | 3120-1520 | 16.20 | 3120-1620 | 36.90 | 3120-1720 | 74.60 |
| 18 x 24 | 3120-1522 | 19.10 | 3120-1622 | 44.20 | 3120-1722 | 88.70 |
| 22 x 34 | 3120-1526 | 32.60 | 3120-1626 | 76.10 | 3120-1726 | 146.20 |
| 24 x 36 | 3120-1528 | 37.50 | 3120-1628 | 88.80 | 3120-1728 | 171.50 |
| 30 x 42 | 3120-1536 | 51.40 | 3120-1636 | 121.30 | | |
| 34 x 44 | 3120-1540 | 63.00 | | | | |
| 36 x 48 | 3120-1544 | 71.80 | | | | |

| ROLL* WIDTH (inches) | STOCK NO. | 50 YARDS | STOCK NO. | 500 FEET |
|----------------------|-----------|----------|-----------|----------|
| 22 | 3110-1126 | \$20.60 | | |
| 24 | 3110-1131 | 21.40 | | |
| 30 | 3110-1140 | 26.90 | | |
| 36 | 3110-1152 | 30.70 | 3110-1154 | \$86.10 |
| 42 | 3110-1161 | 33.90 | | |

* PLEASE SPECIFY MACHINE MAKE AND MODEL WHEN ORDERING.

7020 PV PREMIUM PLOTTER VELLUM

VELLUM EXCLUSIVELY DESIGNED FOR PEN OR PENCIL PLOTTING

7020 PV 20-pound EXTRA SMOOTH vellum 100% new cotton fiber solvent free. Exclusively designed for pen or pencil plotting. Excellent ink receptivity, resists grit wheel tracks, environmentally friendly. Smooth surface permits fastest possible plotting.

PLOTTING

| SHEET SIZE (inches) | STOCK NO. | 100 SHEETS |
|---------------------|-----------|------------|
| 8 1/2 x 11 | 7020-1510 | \$21.70 |
| 11 x 17 | 7020-1516 | 41.90 |
| 12 x 18 | 7020-1518 | 44.00 |
| 17 x 22 | 7020-1520 | 79.30 |
| 18 x 24 | 7020-1522 | 85.90 |
| 22 x 34 | 7020-1526 | 156.60 |
| 24 x 36 | 7020-1528 | 170.00 |
| 30 x 42 | 7020-1536 | 252.50 |
| 34 x 44 | 7020-1540 | 301.50 |
| 36 x 48 | 7020-1544 | 335.00 |
| A4 DIN | 7020-1545 | 24.00 |
| A3 DIN | 7020-1546 | 43.30 |
| A2 DIN | 7020-1547 | 84.10 |
| A1 DIN | 7020-1548 | 166.20 |
| A0 DIN | 7020-1549 | 318.60 |
| B1 DIN | 7020-1550 | 241.40 |

| ROLL WIDTH (inches) | STOCK NO. | 20 YARDS | STOCK NO. | 50 YARDS |
|---------------------|-----------|----------|-----------|----------|
| 18 | 7010-1122 | \$ 30.00 | 7010-1123 | \$ 59.70 |
| 24 | 7010-1130 | 38.10 | 7010-1131 | 73.60 |
| 30 | 7010-1139 | 41.90 | 7010-1140 | 89.10 |
| 36 | 7010-1151 | 46.40 | 7010-1152 | 104.60 |
| 42 | 7010-1160 | 54.20 | 7010-1161 | 106.70 |

LASER

2020 LL LASERLINE VELLUM

2020 LL 20-pound SOLVENT-FREE, 100% NEW COTTON FIBER VELLUM. For use with high resolution laser printers to make negatives from which printing plates can be exposed. Also for making silkscreen positives from computer created artwork. Silkscreen positives can be exposed directly to the screen for printing. In both situations Laserline permits bypassing camera room chemicals to prepare ready to use printing plate negatives or silkscreen positives. Excellent toner receptivity on all desktop laser printers for uniform, dense black areas and sharp, distinct black lines. Environmentally friendly vellum will not scratch or fog drums. Perfect images time after time. Recommended by leading high-resolution laser printer manufacturers.

| SHEET SIZE (inches) | STOCK NO. | 25 SHEETS | STOCK NO. | 50 SHEETS | STOCK NO. | 100 SHEETS | STOCK NO. | 250 SHEETS | STOCK NO. | 500 SHEETS |
|---------------------|-----------|-----------|-----------|-----------|-----------|------------|-----------|------------|-----------|------------|
| 8 1/2 x 11 | 2020-1310 | \$7.20 | 2020-1410 | \$12.00 | 2020-1510 | \$21.40 | 2020-1610 | \$48.70 | 2020-1710 | \$89.40 |
| 8 1/2 x 14 | | | | | 2020-1512 | 24.70 | 2020-1612 | 56.20 | 2020-1712 | 104.80 |
| 11 x 17 | 2020-1316 | 12.10 | 2020-1416 | 24.20 | 2020-1516 | 41.60 | 2020-1616 | 95.00 | 2020-1716 | 178.40 |
| 12 x 18 | | | | | 2020-1518 | 43.70 | 2020-1618 | 100.40 | 2020-1718 | 190.30 |
| 12 x 19 1/2 | 2020-1319 | 15.30 | 2020-1419 | 30.30 | 2020-1519 | 51.90 | 2020-1619 | 124.90 | 2020-1719 | 239.30 |
| 17 x 22 | | | | | 2020-1520 | 78.40 | 2020-1620 | 182.50 | 2020-1720 | 347.30 |

NON-STANDARD PRODUCTS

SPECIAL SIZES – CUT SHEETS & ROLLS

MATERIAL CHARGE

| | 1000H [®] | 1020 [®] | 1025 [®] | 3018XB | 3020XB | 6520EXV | 2020LL | 6016XV | 6120XV 6020XV | 7020PV |
|-----------------------|--------------------|-------------------|-------------------|--------|--------|---------|--------|--------|------------------|--------|
| Plain | \$2.33 | \$2.88 | \$3.15 | \$0.82 | \$0.52 | \$3.22 | \$2.50 | \$1.99 | \$2.50 | \$2.69 |
| Fade-Out [®] | 3.25 | 3.90 | | | | | | | | |

POLICY: ALL SPECIAL SIZE SHEETS & ROLLS ARE NOT CANCELABLE ONCE THE ORDER HAS BEEN CONFIRMED BY THE CUSTOMER AND PRODUCED.

INSTRUCTIONS:

ROLLS – PER ROLL:

Example: 1020 Plain 34" x 75 yd. roll.

A. Determine number of square yards per roll:

1. $34" \div 36" = .944$
2. $.944 \times 75 \text{ yards} = 70.80 \text{ square yards}$

B. Determine retail price per roll:

1. $70.80 \times \$2.88 \text{ (material charge)} = \203.91
- (1) 2. One Time slitting & handling charge = 40.00
3. Retail List Per Roll = **\$243.91**

SHEETS:

Example: 1000H Plain - 18" x 26" - 250 sheet package

A. Determine number of square yards per package:

1. $18" \times 26" = 468 \text{ square inches}$
2. $468 \times 250 \text{ sheets} = 117,000$
3. $117,000 \div 1296 = 90.28 \text{ square yards}$

B. Determine retail price per package:

1. $90.28 \times \$2.33 \text{ (material charge)} = \210.35
- (1) 2. 468 sq inches/handling charge table = 13.50
3. Retail List Per Package = **\$223.85**

SLITTING & HANDLING CHARGE

- (1) \$40.00 – One time charge per width size. No additional charges for the quantity of rolls within each width size.

HANDLING CHARGE

| RESULT (sq. in) | CHARGE |
|-----------------|--------------------|
| 93 – 114 | \$3.20 per package |
| 115 – 216 | 4.70 per package |
| 217 – 432 | 7.30 per package |
| (1) 433 – 882 | 13.50 per package |
| 883 – 1728 | 26.60 per package |
| Over 1728 | |

SPECIAL ITEMS

Please call Customer Service for availability and pricing.

- * Minimum 50 sheets per package.
- For package of 500 (or 250 in case of last category) or more sheets no charge applies.
- For package of 50 sheets or less, please contact Customer Service.

LARGE DOCUMENT COPIER MEDIA GUIDE

| MANUFACTURER MODEL NO. | PREFERRED SIDE | CORE SIZE | CORE COLOR | CORE TAPED | MEDIA RECOMMENDATIONS | | | | | | |
|---------------------------|-------------------|--------------|---------------|---------------|-----------------------|----------|---------|---------|---------|---------|---------|
| | | | | | 6820 XV | 6520 EXV | 6020 XV | 6120 XV | 6016 XV | 3020 XB | 3018 XB |
| BRUNING 9036 | OUT | 3" | BLACK | NO | | X | X | X | X | X | X |
| DIATO SZ920 | IN | 3" | STD | NO | | X | X | X | X | X | X |
| DIETZGEN 636 | OUT | 3" | STD | NO | | X | X | X | X | X | X |
| JDL 3000E | OUT | 3" | STD | NO | | X | | | X | X | |
| JDL 3500E | OUT | 3" | STD | NO | X | | | | | X | X |
| JDL 5000E | OUT | 3" | STD | NO | X | | | | | X | X |
| K&E/OZALID 6030 | OUT | 3" | STD | YES | | X | X | X | X | X | X |
| K&E/OZALID 6036 | OUT | 3" | STD | NO | | X | X | X | X | X | X |
| MITA 3648 | OUT | 3" | STD | NO | | | | | | X | X |
| MITA 1824Z | - | - | - | - | | X | X | X | X | X | X |
| MITA 509 | OUT | 3" | STD | YES | | X | X | X | X | X | X |
| OCÉ 7000 | OUT | 3" | SILVER | NO | | | X | X | X | X | X |
| OCÉ 7025 | OUT | 3" | STD | NO | | | X | X | X | X | X |
| OCÉ 7100 | OUT | 3" | STD | NO | | | X | X | X | X | X |
| OCÉ 7200 | OUT | 3" | BLACK | NO | | X | X | X | X | X | X |
| OCÉ 7350 | OUT | 3" | STD | NO | | | X | X | X | X | X |
| OCÉ 7500 | OUT | 3" | SILVER | NO | | X | X | X | X | X | X |
| OCÉ 7600 | OUT | 3" | STD | NO | | | X | X | X | X | X |
| OCÉ7700 | OUT | 3" | STD | NO | | X | X | X | X | X | X |
| OCÉ 9400 | OUT | 3" | STD | NO | | X | X | X | X | X | X |
| OCÉ 9500-S | OUT | 3" | STD | NO | | X | X | X | X | X | X |
| OCÉ 9700 | OUT | 3" | BLACK | NO | X | | | | | X | X |
| OCÉ 9800 | OUT | 3" | BLACK | NO | X | | | | | X | X |
| RICOH 420 | OUT | 3" | STD | YES | | X | X | X | X | X | X |
| SHACOH MARK II | OUT | 3" | STD | NO | | X | X | X | X | X | X |
| SHACOH SCREEN | OUT | 3" | STD | NO | | X | X | X | X | X | X |
| SHACOH 920 | IN | 1-3/8" & 3" | STD | NO | | X | X | X | X | X | X |
| SHACOH 36 & 42 | OUT | 3" | STD | NO | | X | X | X | X | X | X |
| SHACOH /KIP 1030 | OUT | 3" | STD | NO | | X | X | X | X | X | X |
| SHACOH /KIP 1800 | OUT | 3" | STD | NO | | X | X | X | X | X | X |
| SHACOH /KIP 1880 | OUT | 3" | STD | NO | | X | X | X | X | X | X |
| SHACOH /KIP 7070 | OUT | 3" | STD | NO | | X | X | X | X | X | X |
| SHACOH 3610 | OUT | 3" | STD | NO | | X | X | X | X | X | X |
| SHACOH 3630 | OUT | 3" | STD | NO | | X | X | X | X | X | X |
| SHACOH/KIP 3800 | OUT | 3" | STD | NO | | X | X | X | X | X | X |
| SHACOH 4200 | OUT | 3" | STD | NO | | X | X | X | X | X | X |
| SHACOH 4290 | OUT | 3" | STD | NO | | X | X | X | X | X | X |
| SHACOH /KIP 7060 | OUT | 3" | STD | NO | | X | X | X | X | X | X |
| SHACOH /KIP 2800 | OUT | 3" | STD | NO | | X | X | X | X | X | X |
| SHACOH /KIP 7090 | OUT | 3" | STD | NO | | X | X | X | X | X | X |
| SHACOH /KIP 9810 | OUT | 3" | STD | NO | | X | X | X | X | X | X |
| XEROX 2020 | OUT | 3" | STD | YES | | X | X | X | X | X | X |
| XEROX 2030 | OUT | 3" | STD | NO | | X | X | X | | X | |
| XEROX 2080 | OUT | 3" | STD | YES | | X | X | X | X | X | X |
| XEROX 2515 | OUT | 3" | STD | NO | | X | X | X | | X | X |
| XEROX 2520 | OUT | 3" | STD | NO | | X | X | X | | X | X |
| XEROX 3050 | OUT | 3" | STD | YES | | X | X | X | X | X | X |
| XEROX 3080 | OUT | 3" | STD | YES | | X | X | X | X | X | X |
| XEROX 3090 | OUT | 3" | STD | YES | | X | X | X | X | X | X |
| XEROX 5080 | OUT | 3" | STD | YES | | X | X | X | X | X | X |
| XEROX 8840 | OUT | 3" | BLACK | NO | | X | X | X | X | X | |
| XEROX 8840-D | OUT | 3" | STD | NO | | X | X | X | X | X | X |
| XEROX 8836 LASER | IN | 3" | STD | YES | | X | X | X | | X | X |
| XEROX 8845 | OUT | 3" | STD | YES | | X | X | X | | X | X |
| XEROX 8855 | OUT | 3" | STD | YES | | X | X | X | | X | X |

MISCELLANEOUS

3018 Translucent Bond

Our 18-pound transbond is an inviting low-cost alternative for short run reprographic projects that do not require the superior handling characteristics of vellum.

| SHEET SIZE | STOCK NO. | 100 SHEETS | STOCK NO. | 250 SHEETS | STOCK NO. | 500 SHEETS |
|------------|-----------|------------|-----------|------------|-----------|------------|
| 8 1/2 x 11 | 3220-1510 | 7.00 | 3220-1610 | 16.60 | 3220-1710 | 29.90 |
| 11 x 17 | 3220-1516 | 12.95 | 3220-1616 | 30.10 | 3220-1716 | 57.20 |
| 17 x 22 | 3220-1520 | 17.95 | 3220-1620 | 45.00 | 3220-1720 | 86.50 |
| 18 x 24 | 3220-1522 | 21.50 | 3220-1622 | 54.45 | 3220-1722 | 105.00 |
| 22 x 34 | 3220-1526 | 31.90 | 3220-1626 | 82.25 | 3220-1726 | 155.85 |
| 24 x 36 | 3220-1528 | 39.75 | 3220-1628 | 101.25 | 3220-1728 | 193.50 |
| 30 x 42 | 3220-1536 | 53.80 | 3220-1636 | 137.00 | x | n/a |
| 34 x 44 | 3220-1540 | 78.10 | 3220-1640 | 169.00 | x | n/a |
| 36 x 48 | 3220-1544 | 86.65 | 3220-1644 | 185.20 | x | n/a |

| ROLL SIZE | STOCK NO. | LIST |
|----------------|-----------|-------|
| 24" x 50 yards | 3210-1131 | 20.00 |
| 30" x 50 yards | 3210-1140 | 24.00 |
| 36" x 50 yards | 3210-1152 | 27.00 |

3020 Opaque Bond

Our 20-pound premium Opaque Bond provides a bright, high contrast media for reprographic check plots and spot color applications.

| SHEET SIZE | STOCK NO. | 100 SHEETS | STOCK NO. | 250 SHEETS | STOCK NO. | 500 SHEETS |
|------------|-----------|------------|-----------|------------|-----------|------------|
| 8 1/2 x 11 | 3320-1510 | 5.80 | 3320-1610 | 11.00 | 3320-1710 | 20.80 |
| 11 x 17 | 3320-1516 | 9.90 | 3320-1616 | 22.60 | 3320-1716 | 46.20 |
| 17 x 22 | 3320-1520 | 12.65 | 3320-1620 | 31.80 | 3320-1720 | 59.95 |
| 18 x 24 | 3320-1522 | 15.30 | 3320-1622 | 39.15 | 3320-1722 | 74.20 |
| 22 x 34 | 3320-1526 | 21.25 | 3320-1626 | 55.65 | 3320-1726 | 102.75 |
| 24 x 36 | 3320-1528 | 27.43 | 3320-1628 | 70.45 | 3320-1728 | 131.95 |
| 30 x 42 | 3320-1536 | 35.92 | 3320-1636 | 92.30 | x | n/a |
| 34 x 44 | 3320-1540 | 56.86 | x | n/a | x | n/a |

| ROLL SIZE | STOCK NO. | LIST |
|----------------|-----------|-------|
| 24" x 50 yards | 3310-1131 | 15.00 |
| 30" x 50 yards | 3310-1140 | 17.00 |
| 36" x 50 yards | 3310-1152 | 20.00 |

9016

16 Pound Vellum

Our premium 16-pound vellum is made from 100% new cotton fiber. The archival qualities of 100% cotton fiber make our vellum extremely resistant to aging. 9016 is transparentized using Clearprint's solvent free process. Images render superior ink line density for maximum reprint speed.

| SHEET SIZE | STOCK NO. | 100 SHEETS | STOCK NO. | 250 SHEETS | STOCK NO. | 500 SHEETS |
|------------|-----------|------------|-----------|------------|-----------|------------|
| 8 1/2 x 11 | 9020-1510 | 17.20 | 9020-1610 | 37.80 | 9020-1710 | 68.90 |
| 11 x 17 | 9020-1516 | 33.10 | 9020-1616 | 73.80 | 9020-1716 | 137.60 |
| 17 x 22 | 9020-1520 | 61.40 | 9020-1620 | 140.70 | 9020-1720 | 264.30 |
| 18 x 24 | 9020-1522 | 66.50 | 9020-1622 | 153.80 | 9020-1722 | 290.10 |
| 22 x 34 | 9020-1526 | 121.10 | 9020-1626 | 279.80 | 9020-1726 | 528.40 |
| 24 x 36 | 9020-1528 | 126.90 | 9020-1628 | 305.70 | 9020-1728 | 558.10 |
| 30 x 42 | 9020-1536 | 189.50 | 9020-1636 | 415.80 | x | n/a |
| 34 x 44 | 9020-1540 | 240.60 | 9020-1640 | 524.80 | x | n/a |
| 36 x 48 | 9020-1544 | 243.80 | 9020-1644 | 530.00 | x | n/a |

| ROLL WIDTH | STOCK NO. | 20 YARDS | STOCK NO. | 50 YARDS |
|------------|-----------|----------|-----------|----------|
| 24" | 9010-1130 | 21.20 | 9010-1131 | 44.50 |
| 30" | 9010-1139 | 24.40 | 9010-1140 | 53.00 |
| 36" | 9010-1151 | 29.70 | 9010-1152 | 63.60 |

9020

20 Pound Vellum

Our premium 20-pound vellum is made from 100% new cotton fiber. The additional weight of this paper gives it additional durability. The archival qualities of 100% cotton fiber make our vellum extremely resistant to aging. 9020 is transparentized using Clearprint's solvent free process. Images render superior ink line density for maximum reprint speed.

| SHEET SIZE | STOCK NO. | 100 SHEETS | STOCK NO. | 250 SHEETS | STOCK NO. | 500 SHEETS |
|------------|-----------|------------|-----------|------------|-----------|------------|
| 8 1/2 x 11 | 9220-1510 | 20.60 | 9220-1610 | 46.60 | 9220-1710 | 85.80 |
| 11 x 17 | 9220-1516 | 40.00 | 9220-1616 | 91.30 | 9220-1716 | 171.20 |
| 17 x 22 | 9220-1520 | 75.40 | 9220-1620 | 175.10 | 9220-1720 | 333.20 |
| 18 x 24 | 9220-1522 | 81.70 | 9220-1622 | 191.00 | 9220-1722 | 364.40 |
| 22 x 34 | 9220-1526 | 148.90 | 9220-1626 | 348.50 | 9220-1726 | 666.00 |
| 24 x 36 | 9220-1528 | 155.40 | 9220-1628 | 380.30 | 9220-1728 | 701.20 |
| 30 x 42 | 9220-1536 | 239.90 | 9220-1636 | 522.70 | x | n/a |
| 34 x 44 | 9220-1540 | 294.60 | 9220-1640 | 659.30 | x | n/a |
| 36 x 48 | 9220-1544 | 302.10 | 9220-1644 | 667.80 | x | n/a |

| ROLL WIDTH | STOCK NO. | 20 YARDS | STOCK NO. | 50 YARDS |
|------------|-----------|----------|-----------|----------|
| 24" | 9210-1130 | 23.30 | 9210-1131 | 53.00 |
| 30" | 9210-1139 | 28.60 | 9210-1140 | 63.60 |
| 36" | 9210-1151 | 33.90 | 9210-1152 | 74.20 |

9010 Economy Color Bond

This value-minded 24-pound color bond is perfect for CAD color line work and imagery that requires light to medium fills. Its special coating allows intricate detail and small point text to be imaged with remarkable resolution.

| SHEET SIZE | STOCK NO. | 100 SHEETS |
|------------|-----------|------------|
| 11 x 17 | 9120-1516 | 15.90 |
| 24 x 36 | 9120-1528 | 57.00 |

| ROLL SIZE | STOCK NO. | LIST |
|----------------|-----------|-------|
| 24" x 150 feet | 9110-1194 | 27.38 |
| 30" x 150 feet | 9110-1195 | 34.65 |
| 36" x 150 feet | 9110-1196 | 41.00 |

9040 Premium Color Bond

Our premium 24-pound color bond is perfect for a wide range of color imagery. Its brilliant color snap fast dry time will make it a perfect match for your everyday color imagery needs.

| SHEET SIZE | STOCK NO. | 100 SHEETS |
|------------|-----------|------------|
| 11 x 17 | 9420-1516 | 18.95 |
| 24 x 36 | 9420-1528 | 68.25 |

| ROLL SIZE | STOCK NO. | LIST |
|----------------|-----------|-------|
| 24" x 150 feet | 9410-1194 | 32.60 |
| 30" x 150 feet | 9410-1195 | 40.80 |
| 36" x 150 feet | 9410-1196 | 48.95 |

9042 Heavyweight Color Bond

This 36-pound color bond will accept heavier ink applications and resist cockling and puckering. It features outstanding color depth & intensity, even in near photo-realistic imagery.

| ROLL SIZE | STOCK NO. | LIST |
|----------------|-----------|-------|
| 24" x 100 feet | 9310-1136 | 43.50 |
| 30" x 100 feet | 9310-1143 | 53.90 |
| 36" x 100 feet | 9310-1157 | 62.50 |

9055 4 mil Clear Film

Our 4-mil polyester Clear Film offers exceptional dimensional stability, as well as superior tear & crease resistance. This film is especially useful in overlay applications.

| ROLL SIZE | STOCK NO. | LIST |
|----------------|-----------|--------|
| 24" x 75 feet | 8010-1135 | 113.25 |
| 36" x 75 feet | 8010-1155 | 161.80 |
| 50" x 100 feet | 8010-1185 | 292.50 |

9056 4 mil White Opaque Film

Our 4-mil polyester White Opaque Film offers the same exceptional dimensional stability and superior tear & crease resistance as our other film products. Its white opaque coating offers an effective contrast for color presentation graphics.

| ROLL SIZE | STOCK NO. | LIST |
|----------------|-----------|--------|
| 24" x 100 feet | 8110-1136 | 158.90 |
| 36" x 100 feet | 8110-1157 | 227.50 |
| 50" x 100 feet | 8110-1185 | 312.50 |

CLEARPRINT 2000

9057 4 mil Reverse Print Backlit Film

Our reverse print backlit film obviates the need for additional lamination in most backlit applications. This particular film offers superior Encad/HP cross platform performance.

| ROLL SIZE | STOCK NO. | LIST |
|----------------|-----------|--------|
| 36" x 100 feet | 8210-1157 | 302.00 |

9058 4 mil Right Print Backlit Film

Our right-printing backlit film is specially tuned for Encad printers.

| ROLL SIZE | STOCK NO. | LIST |
|----------------|-----------|--------|
| 36" x 100 feet | 8310-1157 | 282.85 |

9060/9061

6 mil Universal Photo
Matte/Glossy

Renders accurate photo-realistic imagery on both Encad & HP late model plotters.

| ROLL WIDTH | STOCK NO. MATTE | LIST | STOCK NO. GLOSSY | LIST |
|----------------|-----------------|--------|------------------|--------|
| 36" x 100 feet | 8510-1157 | 185.00 | 8610-1157 | 185.00 |
| 50" x 100 feet | 8510-1185 | 251.00 | 8610-1185 | 251.00 |

9067

7 mil Right Print
Backlit Film

Our premium heavyweight right-side printing backlit film works in both Encad and HP printers. The 7-mil thickness greatly enhances both its durability and ease of handling.

| ROLL SIZE | STOCK NO. | 100 SHEETS |
|----------------|-----------|------------|
| 36" x 75 feet | 8710-1155 | 227.00 |
| 50" x 100 feet | 8710-1190 | 407.00 |

9068

Double Matte
Erasable Film

A 4-mil film for both Encad & HP color inkjet applications, with the preferred side featuring an erasable coating. Double-sided coating provides an extremely stable imaging surface.

| SHEET SIZE | STOCK NO. | 25 SHEETS | STOCK NO. | 100 SHEETS |
|------------|-----------|-----------|-----------|------------|
| 8 1/2 x 11 | 8820-1310 | 14.40 | 8820-1510 | 57.80 |
| 11 x 17 | 8820-1316 | 28.40 | 8820-1516 | 113.40 |
| 17 x 22 | 8820-1320 | 54.80 | 8820-1520 | 218.40 |
| 18 x 24 | 8820-1322 | 63.50 | 8820-1522 | 254.10 |
| 22 x 34 | 8820-1326 | 109.60 | 8820-1526 | 438.50 |
| 24 x 36 | 8820-1328 | 126.30 | 8820-1528 | 505.30 |
| 30 x 42 | 8820-1336 | 182.40 | x | n/a |
| 34 x 44 | 8820-1340 | 217.10 | x | n/a |
| 36 x 48 | 8820-1344 | 250.20 | x | n/a |

| ROLL SIZE | STOCK NO. | LIST |
|----------------|-----------|--------|
| 36" x 40 yards | 8810-1183 | 295.00 |

9070/9071

7 mil Universal Photo
Matte/Glossy

Our heaviest weight photo paper renders stunning photo-realistic imagery. These products are optimized for the Encad family of printers, and feature proprietary coatings that greatly extend the commercial life of prints imaged upon them.

| ROLL SIZE | STOCK NO. MATTE | LIST | STOCK NO. GLOSSY | LIST |
|----------------|-----------------|--------|------------------|--------|
| 24" x 100 feet | 9710-1136 | 147.45 | 9810-1136 | 147.45 |
| 36" x 100 feet | 9710-1157 | 210.60 | 9810-1157 | 210.60 |

9090 Artist's Canvas

Our 20-mil heavily textured canvas imbues a "masterpiece" quality to images. Perfect for portraiture & fine art reproduction, as well as any picture in need of a durable, drape-able substrate.

| ROLL SIZE | STOCK NO. | LIST |
|---------------|-----------|--------|
| 24" x 40 feet | 9910-1134 | 210.00 |
| 36" x 40 feet | 9910-1147 | 299.00 |

9095 5 mil

Adhesive-Backed Vinyl

Our adhesive-backed vinyl provides a durable substrate for many sign & banner applications. The semi-permanent adhesive is hand-removable from most smooth surfaces.

| ROLL SIZE | STOCK NO. | LIST |
|---------------|-----------|--------|
| 36" x 60 feet | 9510-1148 | 325.00 |

9096 Banner Material

This 40-pound reinforced product provides a high strength to weight ratio, as well as superior imaging qualities on a wide range of inkjet printers. Images created with pigmented inks are water resistant, making them appropriate for short-term outdoor signage.

| ROLL SIZE | STOCK NO. | LIST |
|---------------|-----------|--------|
| 36" x 90 feet | 9610-1156 | 200.00 |

TINTZ® Tinted Vellum

Clearprint is proud to present six exciting new pastel shades of 100% cotton vellum. Tintz® can be used in a myriad of artistic applications. The delicately shaded surface can be removed via erasure for additional artistic effect. Tintz® feature the same archival qualities of all Clearprint vellum products.

| SHEET SIZE | OLIVE | SAFFRON | BERRY | RUSSET | CARNATION | LILAC | 10 SHEETS |
|------------|-----------|-----------|-----------|-----------|-----------|-----------|-----------|
| 8 1/2 x 11 | 4020-1210 | 4120-1210 | 4220-1210 | 4320-1210 | 4420-1210 | 4520-1210 | 4.99 |
| 11 x 17 | 4020-1216 | 4120-1216 | 4220-1216 | 4320-1216 | 4420-1216 | 4520-1216 | 7.99 |
| 18 x 24 | 4020-1222 | 4120-1222 | 4220-1222 | 4320-1222 | 4420-1222 | 4520-1222 | 13.99 |

| SHEET SIZE | ASSORTED | 18 SHEETS | ASSORTED | 36 SHEETS |
|------------|-----------|-----------|-----------|-----------|
| 8 1/2 x 11 | 4920-1810 | 6.99 | 4920-1010 | 12.39 |
| 11 x 17 | 4920-1816 | 12.69 | 4920-1016 | 22.99 |
| 18 x 24 | 4920-1822 | 23.99 | 4920-1022 | 45.59 |

5020 STANDARD PRESENTATION

Clearprint's 32 lb. Standard Presentation Paper renders stunning graphic imagery on virtually all current desktop printers. It is especially suited for presentation and near photographic imagery. In addition, Clearprint's Standard Presentation Paper is certified for use at 1440 dpi.

| SHEET SIZE | STOCK NO. | 10 SHEETS | STOCK NO. | 25 SHEETS | STOCK NO. | 100 SHEETS |
|------------|-----------|-----------|-----------|-----------|-----------|------------|
| 8 1/2 x 11 | 5020-1210 | 5.29 | 5020-1310 | 8.29 | 5020-1510 | 23.39 |
| 9 x 12 | 5020-1214 | 5.49 | 5020-1314 | 8.99 | 5020-1514 | 25.99 |
| 11 x 17 | 5020-1216 | 9.79 | 5020-1316 | 14.99 | 5020-1516 | 41.39 |
| 13 x 19 | 5020-1213 | 11.59 | 5020-1313 | 18.29 | 5020-1513 | 51.99 |

5120 PREMIUM PRESENTATION

Clearprint's 46 lb. Premium Presentation Paper renders stunning graphic imagery on virtually all current desktop printers. It is especially suited for presentation and near photographic imagery. In addition, Clearprint's Premium Presentation Paper is certified for use at 1440 dpi.

| SHEET SIZE | STOCK NO. | 10 SHEETS | STOCK NO. | 25 SHEETS | STOCK NO. | 100 SHEETS |
|------------|-----------|-----------|-----------|-----------|-----------|------------|
| 8 1/2 x 11 | 5120-1210 | 5.99 | 5120-1310 | 9.69 | 5120-1510 | 29.39 |
| 9 x 12 | 5120-1214 | 6.29 | 5120-1314 | 10.69 | 5120-1514 | 32.59 |
| 11 x 17 | 5120-1216 | 10.99 | 5120-1316 | 17.99 | 5120-1516 | 52.99 |
| 13 x 19 | 5120-1213 | 12.99 | 5120-1313 | 21.99 | 5120-1513 | 66.99 |

5220 CANVAS TEXTURED

Clearprint's Canvas Textured Art Paper renders stunning artistic imagery on virtually all current desktop inkjet printers. The textured surface adds a "fine art" touch. In addition, Clearprint's Canvas Textured Art Paper is certified for use at 1440 dpi.

| SHEET SIZE | STOCK NO. | 10 SHEETS | STOCK NO. | 25 SHEETS | STOCK NO. | 100 SHEETS |
|------------|-----------|-----------|-----------|-----------|-----------|------------|
| 8 1/2 x 11 | 5220-1210 | 12.39 | 5220-1310 | 26.39 | 5220-1510 | 95.99 |
| 9 x 12 | 5220-1214 | 13.99 | 5220-1314 | 29.99 | 5220-1514 | 109.99 |
| 11 x 17 | 5220-1216 | 24.39 | 5220-1316 | 51.39 | 5220-1516 | 186.59 |
| 13 x 19 | 5220-1213 | 30.99 | 5220-1313 | 61.29 | 5220-1513 | 243.49 |

5320 PHOTO GLOSSY

Clearprint's 9 mil Glossy Photo Paper renders stunning photorealistic imagery on virtually all current desktop inkjet printers. In addition, Clearprint's 9 mil Glossy Photo Paper is certified for use at 1440 dpi.

| SHEET SIZE | STOCK NO. | 10 SHEETS | STOCK NO. | 25 SHEETS | STOCK NO. | 100 SHEETS |
|------------|-----------|-----------|-----------|-----------|-----------|------------|
| 8 1/2 x 11 | 5320-1210 | 12.29 | 5320-1310 | 25.59 | 5320-1510 | 92.79 |
| 9 x 12 | 5320-1214 | 13.49 | 5320-1314 | 28.89 | 5320-1514 | 105.99 |
| 11 x 17 | 5320-1216 | 23.99 | 5320-1316 | 49.69 | 5320-1516 | 179.99 |
| 13 x 19 | 5320-1213 | 29.99 | 5320-1313 | 63.99 | 5320-1513 | 234.79 |

SMALL FORMAT
INKJET

MEDIA/PRINTER COMPATIBILITY GUIDE

| CLEARPRINT PAPER NO. | MEDIA TYPE | HP 750, 755 | HP 1050/1055 | HP 2500/3500 | NOVAJET 2, 3, 4 | PROe | TECHJET |
|----------------------|----------------------------------|----------------|--------------|----------------|-----------------|------|----------------|
| 3018 | #18 Transbond | C | C | B | C | C | C |
| 3020 | #20 Bond | C | C | B | C | C | C |
| 9010 | #24 Economy Bond | A | A | X | X | X | X |
| 9016 | #16 Vellum | C | C | B | C | C | C |
| 9020 | #20 Vellum | C | C | B | C | C | C |
| 9040 | #24 Color Bond | A | A | X | X | X | X |
| 9042 | #36 Color Bond | A | A | X | X | X | X |
| 9055 | 4 mil Clear Film | A | X | A | A | A | A |
| 9056 | 4 mil White Film | A | X | A | A | A | A |
| 9057 | 4 mil Backlit Reverse Print Film | A | X | A | A | A | A |
| 9058 | 4 mil Backlit Right Print Film | X | X | X | A | A | X |
| 9060 | 6 mil Universal Photo Matte | A | X | A | A | A | A |
| 9061 | 6 mil Universal Photo Gloss | A | X | A | A | A | A |
| 9067 | 7 mil Backlit Right Print Film | A | X | A | A | A | A |
| 9068 | Double Matte Erasable Film | C [•] | X | C [•] | C | C | C [•] |
| 9070 | 7 mil Photo Semi Matte | X | X | X | A | A | X |
| 9071 | 7 mil Photo Gloss | X | X | X | A | A | X |
| 9090 | Canvas | A | X | X | A | A | X |
| 9095 | 5 mil Adhesive-backed Vinyl | A | X | B | A | A | X |
| 9096 | Banner Material | A | X | A | A | A | X |

A Full Compatibility

B Partial Compatibility

C Monochromatic (Black)

X Not Recommended

• Denotes Light Color Application